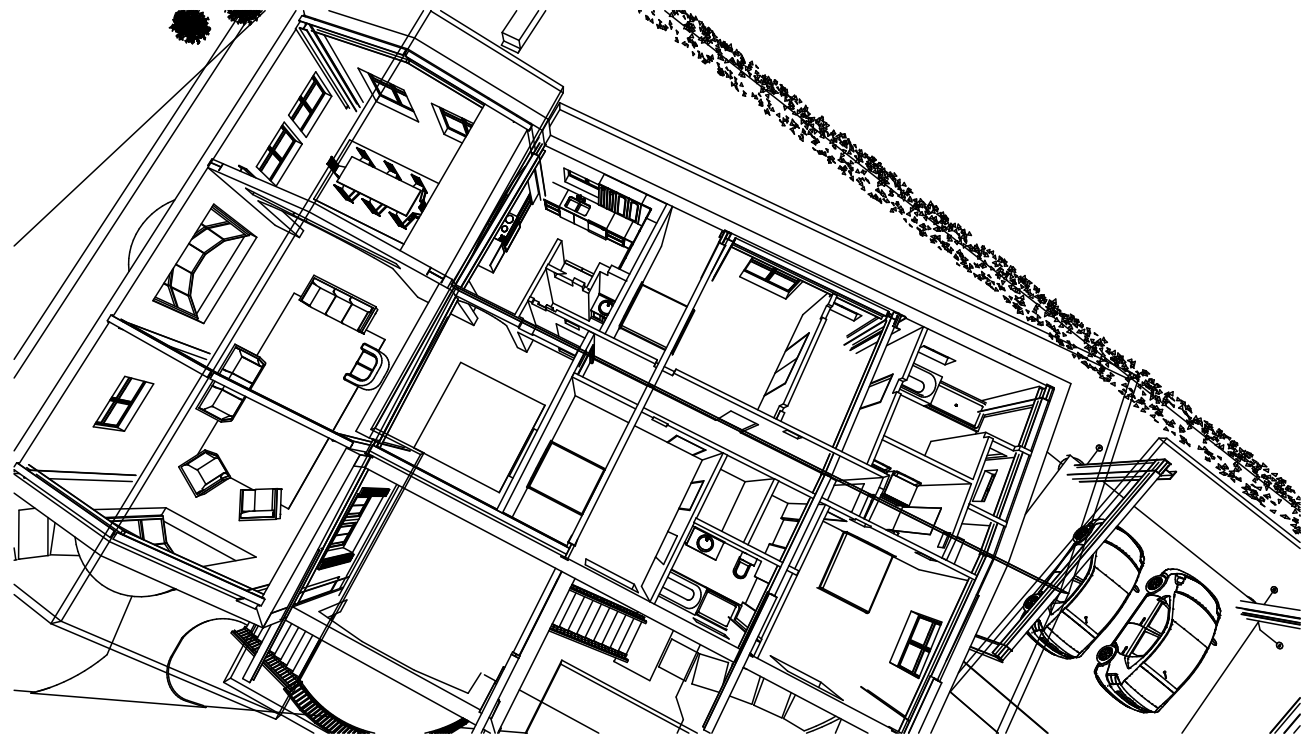




CATEGORY-5: "THE PROVINCIAL"

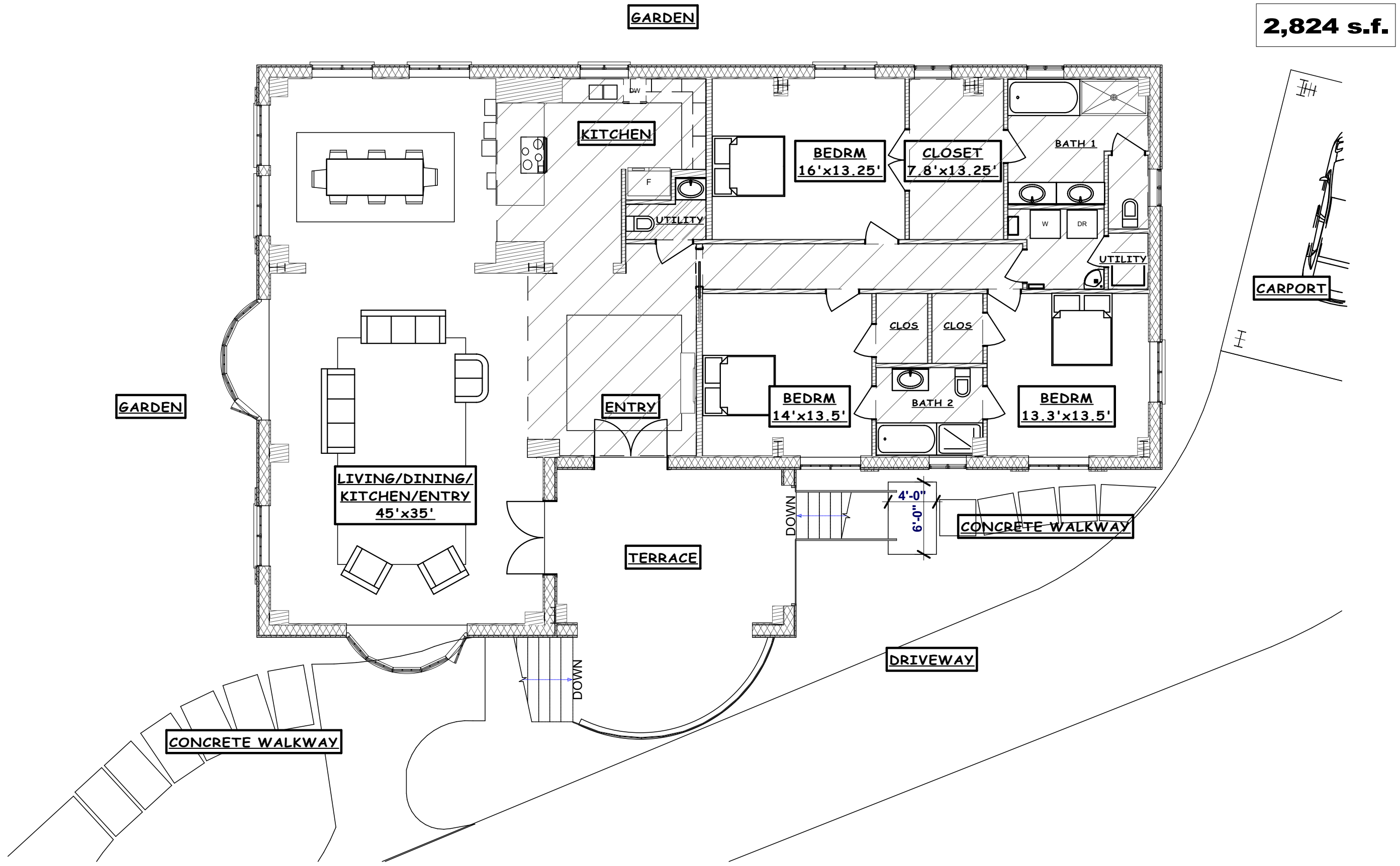


The "Cat-5" Storm Defense House weaves common types of construction into a hybrid of steel and lumber that is strong and durable, quick to complete, and well capable of delivering the elevation, strength, and energy efficiency required by the extreme weather of our new 21st Century climate



The 'CATEGORY-5' Storm Defense House provides a secure solution to the challenges of 21st Century storms, in a design that is both roomy and gracious. Its durable system - much stronger than typical - assures many decades of low maintenance occupancy.

- 1. Rated for Wind Gusts up to 157 mph**
- 2. Floor Elevation at Minimum 60"+ Above Grade or Flood**
- 3. R-63 and R-50 Insulation at Walls and Roofs**
- 4. Huge Roof Areas available for Outdoor Living, Solar Power and Water Harvests**
- 5. Concealed steel structure Stops Moisture, Stops Bugs, Stops Mold**
- 6. Ventilated Flow-through Crawlspace with break-away enclosure: No Standing Water, No Rising Damp**
- 7. Layout Flexibility**



2,824 s.f.

The 'Category-5's structure of steel columns and beams means no load-bearing walls, anywhere. Therefore, the interior plan can easily be adapted to owner needs.

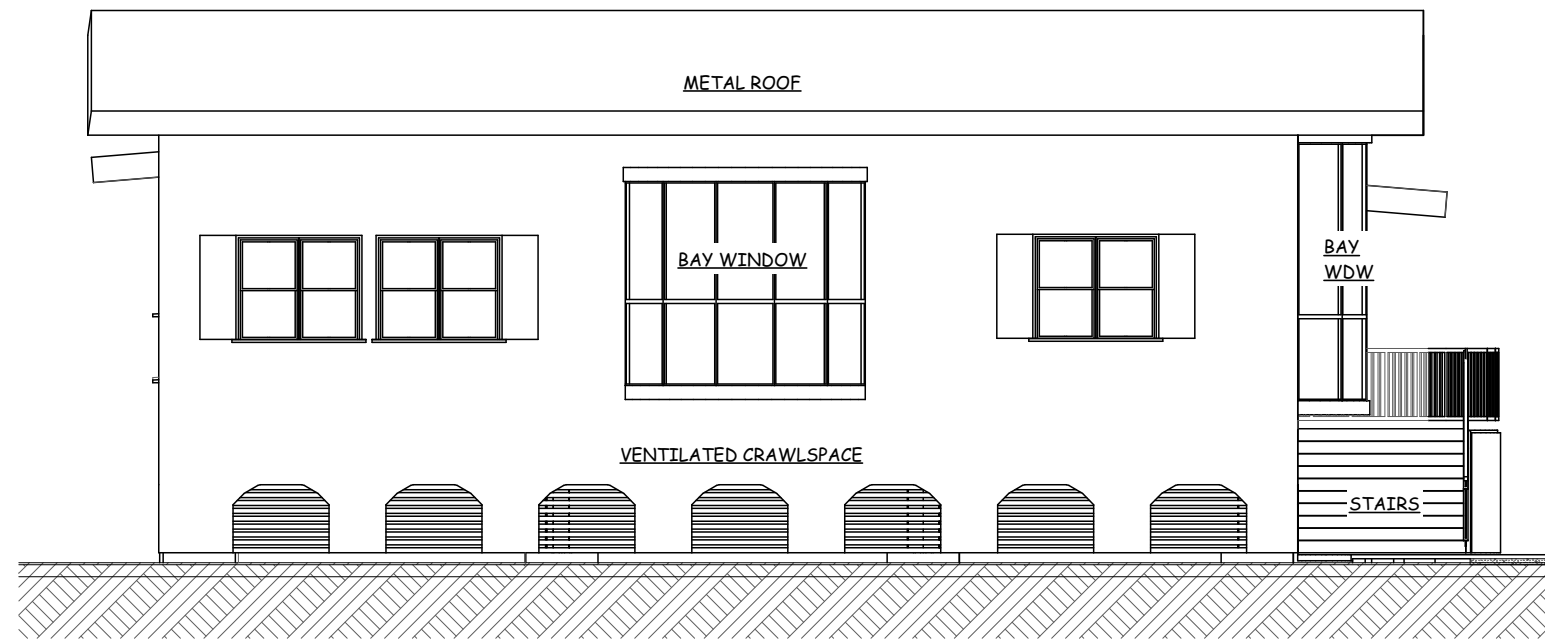
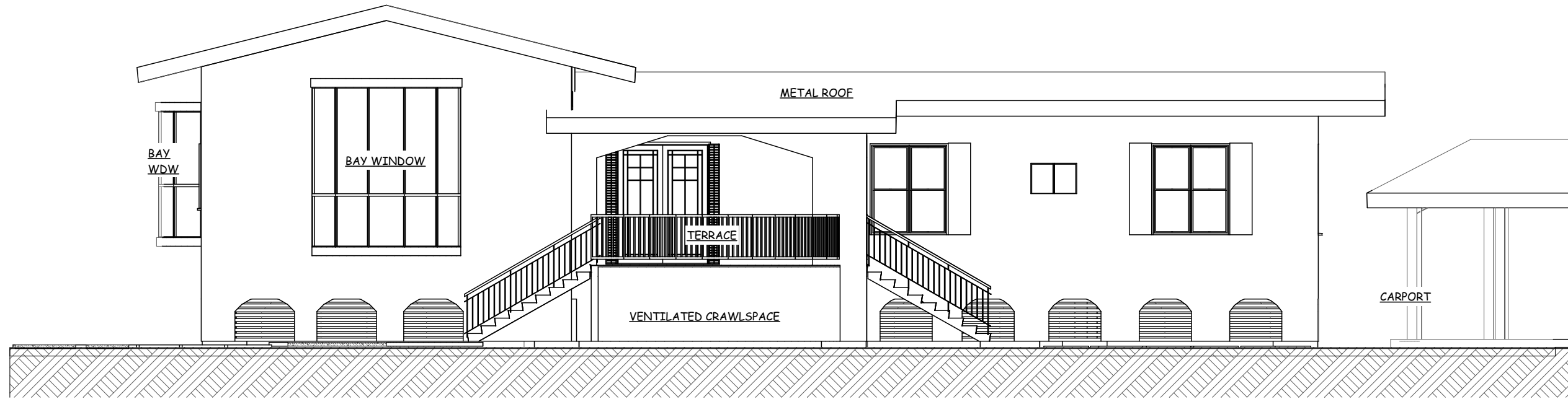
CAMERON ARMSTRONG
 ARCHITECTS
 5423 GIBSON STREET
 HOUSTON, TX 77007
 713.398.5207
 www.cameronarmstrong.com

CATEGORY-5
 STORM DEFENSE HOUSE

ARCHITECTURE
 1/8" = 1'-0"
 Wednesday, January 29, 2020

THE ARCHITECTURAL WORKS PRESENTED HEREIN, INCLUDING DRAWINGS, DETAILS AND SPECIFICATIONS, AND FURTHER INCLUDING ANY DRAWINGS OR BUILDING(S) MADE IN ACCORDANCE WITH, OR BASED UPON THEM, IN WHOLE OR IN PART, ARE THE SOLE COPYRIGHTED PROPERTY OF CAMERON ARMSTRONG, Copyright 2017, WITHOUT WHOSE EXPRESS WRITTEN PERMISSION THEIR USE OR REPRODUCTION FOR ANY PURPOSE IS PROHIBITED.

2,824 s.f.



An exterior finish of synthetic stucco applied to a layer of rigid insulating foam secured to high strength (60,000 psf) metal sheathing assures the Category-5's security against rough weather. Its sloped, sand-bed crawlspace with ventilated "break away" enclosure assures no pooling floodwaters below the building, and no rising damp carrying mold and disease up into the house

CAMERON ARMSTRONG
ARCHITECTS
HOUSTON, TX 77007
www.cameronarmstrong.com

CATEGORY-5
STORM DEFENSE HOUSE

ELEVATIONS

1/8" = 1'-0"

Wednesday, January 29, 2020

THE ARCHITECTURAL WORKS PRESENTED HEREIN, INCLUDING DRAWINGS, DETAILS AND SPECIFICATIONS, AND FURTHER INCLUDING ANY DRAWINGS OR BUILDING(S) MADE IN ACCORDANCE WITH, OR BASED UPON THEM, IN WHOLE OR IN PART, ARE THE SOLE COPYRIGHTED PROPERTY OF CAMERON ARMSTRONG, Copyright 2017, WITHOUT WHOSE EXPRESS WRITTEN PERMISSION THEIR USE OR REPRODUCTION FOR ANY PURPOSE IS PROHIBITED.